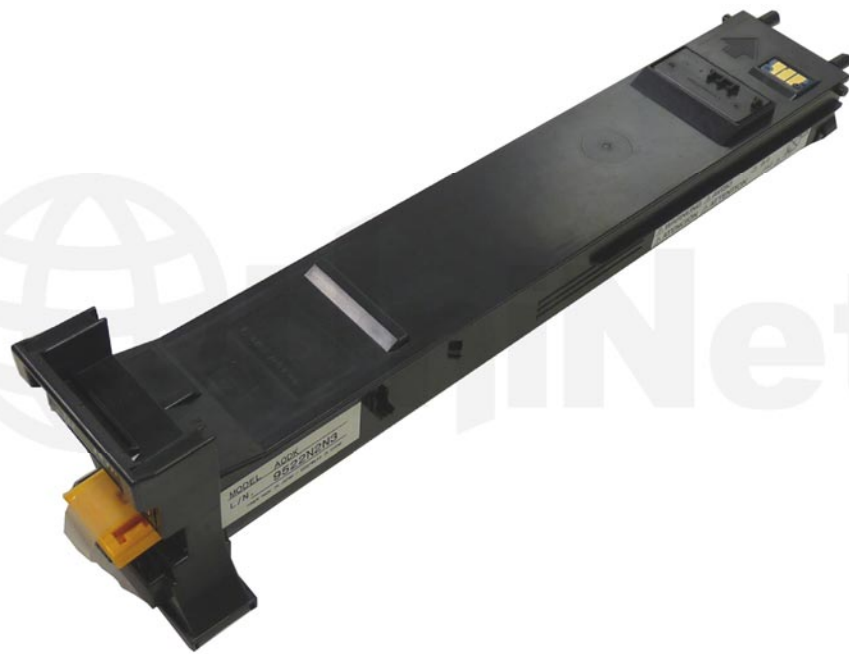


# KYOCERA® TK-112 SERIES TONER CARTRIDGE REMANUFACTURING INSTRUCTIONS



KYOCERA TK-112 SERIES TONER CARTRIDGE

# REMANUFACTURING THE KYOCERA TK-112 SERIES TONER CARTRIDGES

By Mike Josiah and the Technical Staff at UniNet



The Kyocera TK-112 series toner cartridges are used in the FS-720, 820 and the 1016. They are rated for 6,000 pages at 5% coverage. There are also the TK-112E and TK-110 cartridges that are sold in Europe (3,000 and 6,000 pages respectively). There is no chip on the cartridge.



1. Remove the fill plug.

Clean out all the remaining toner.



2. Make sure the toner port is closed.

Fill with the TK-112 toner.



3. Re-install the fill plug.