

DELL® 1320CN

TONER CARTRIDGE REMANUFACTURING INSTRUCTIONS



DELL 1320CN TONER CARTRIDGE

REMANUFACTURING THE DELL 1320CN TONER CARTRIDGES

By Mike Josiah and the Technical Staff at UniNet

First released in December 2007, the Dell 1320cn printers are based on a 16ppm (black), 12ppm (color), 600 dpi engine. The toner cartridges are very small and very easy to do. In fact, this is most likely one of the simplest cartridges I have ever written about.

At the time of this writing, Dell was selling these machines for \$229.00 USD after a \$70.00 instant rebate. With prices like that, and the yield so low on the toner cartridges, combined with Dell's cost on them, anyone who had this machine would be looking to save some money on the cartridges. There is a chip on the cartridge that has to be replaced every cycle and these chips are available. The machines, when new, come with low yield cartridges. These cartridges are physically identical to the high yield, so they can easily be made into high yield cartridges.



The Dell 1320Cn machines also use a unique single drum cartridge that has all four drums in it. This cartridge will be covered in a later instruction.

Part numbers from Dell never seem to be all that clear so I am listing them in all the versions I found. The majority of the low yield numbers are taken from the Staples website:

HY BLACK
310-9058
593-10258

HY CYAN
310-9060
593-10259

HY MAGENTA
310-9064
593-10261

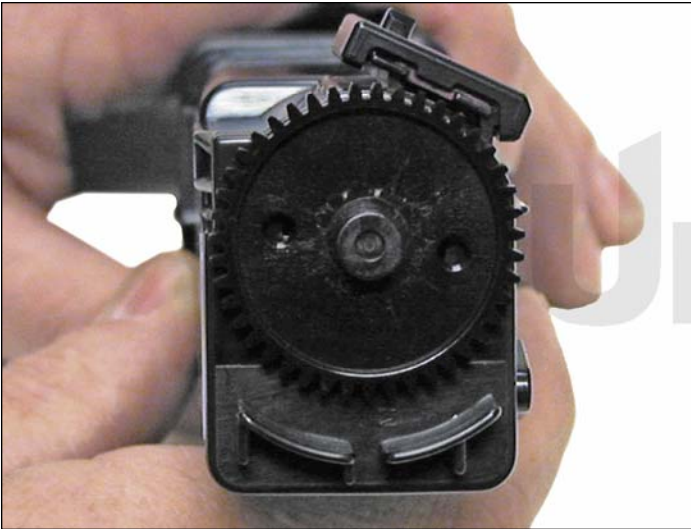
HY YELLOW
310-9062
593-10260

LY BLACK
310-9059
RY857
719011
MT234/RY857

LY CYAN
310-9061
RY854
719019
MT235/RY854

LY MAGENTA
310-9065
RY855
718936
MT237/RY855

LY YELLOW
310-9063
RY856
718934
MT236/RY856



All four of the toner cartridges shown are different in that they each have unique tabs on the back that prevent one color from being inserted into another color's slot.

These are extremely fast and easy cartridges to do and should prove to be a nice profit center for you.

REQUIRED TOOLS

1. Toner approved vacuum
2. A small common screwdriver

REQUIRED SUPPLIES

1. 100g color toner for use in Dell 1320cn
2. Replacement chip
3. Cotton swabs
4. Soft lint-free wipes



1. Remove the two screws located on the waste chamber.

Remove the waste chamber.

Be careful not to lose the gears.



2. Press in on the two tabs of one side as shown to release the waste chamber. It is sometimes helpful to press back on the waste chamber as the tabs are pressed in.

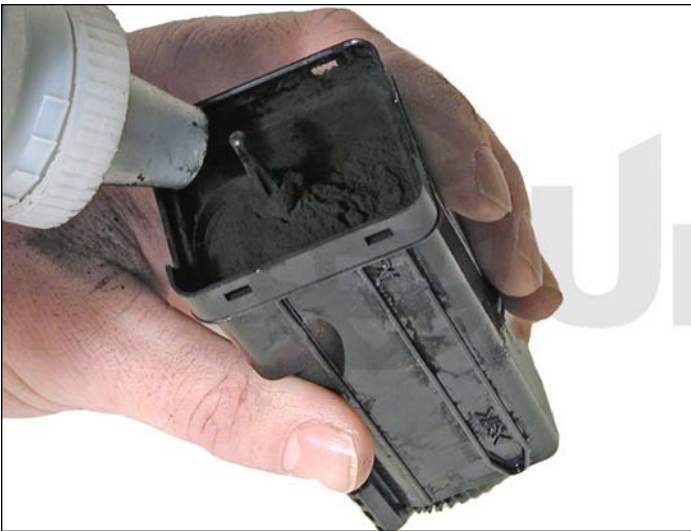


3. Clean out any waste toner from the chamber.



4. Remove the supply hopper cover.

Clean out any remaining toner.

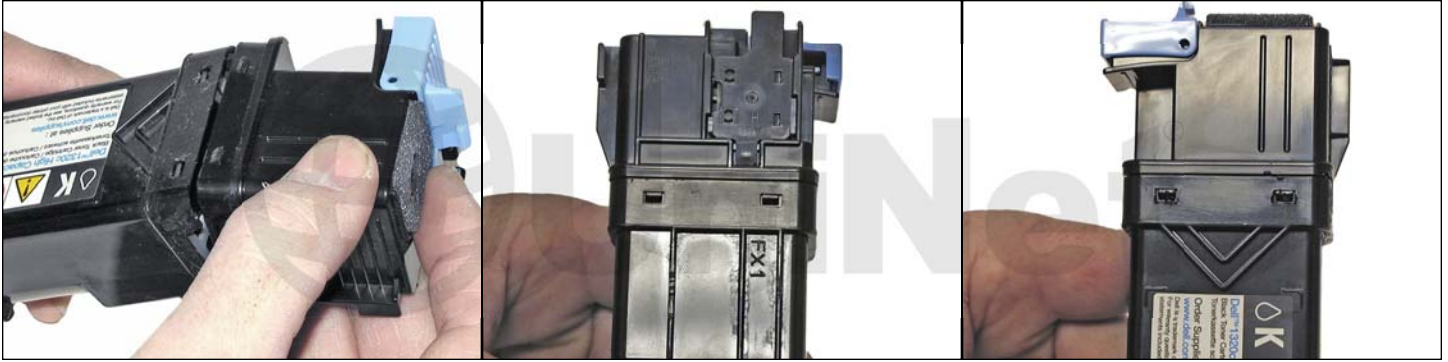


5. Fill the hopper with the appropriate color toner. Remember, while the cartridges all look the same, they are not interchangeable. Each color has a different set of plastic tabs.



6. Clean the plastic lip where the hopper cover sits of any toner.

Replace the cover.

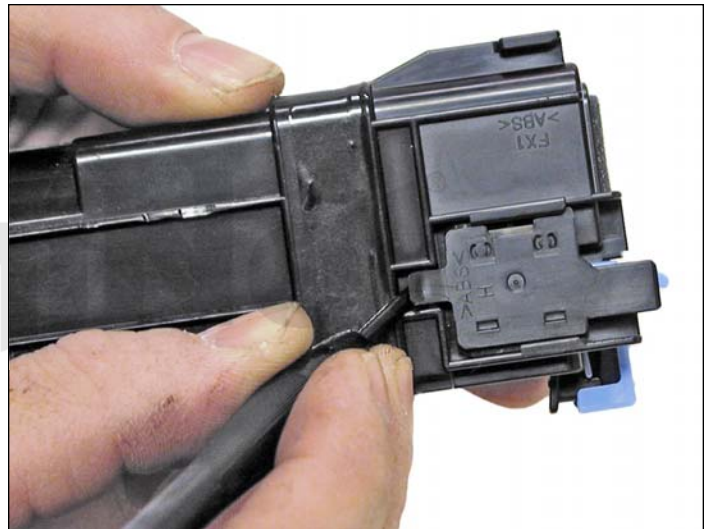


7. Install the waste chamber on to the supply hopper.

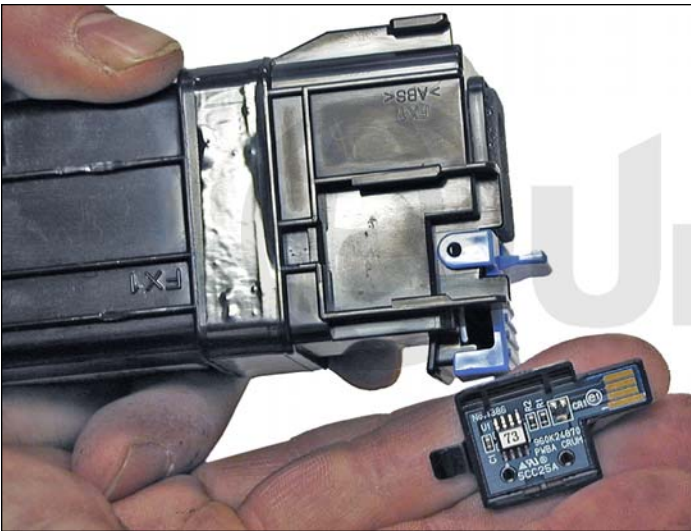
Make sure all four tabs are locked in place.



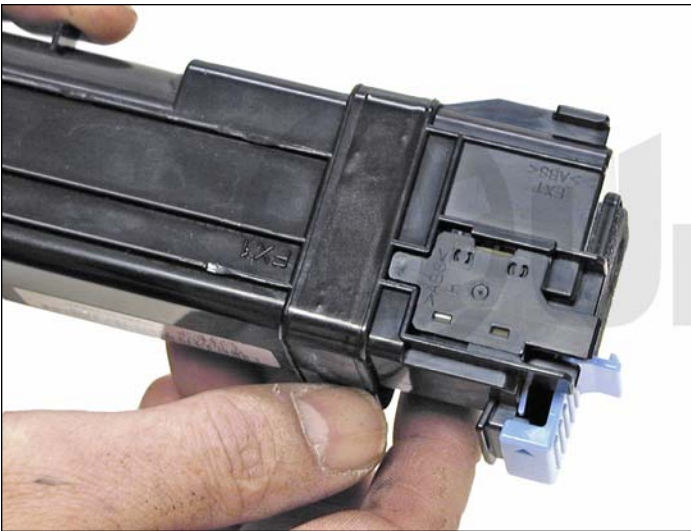
8. Re-install the black tape seal across the seam. If the OEM tape is not useable, good black Rubber electrical tape (not the vinyl type) will work fine (toner will stick to anything made from vinyl).



9. Carefully pry up the plastic chip holder tab.



10. Slide the holder out of the cartridge and replace the chip.



11. Slide the holder back in place until the tab locks in place.