

XEROX® PHASER 6200 • 6250

TONER CARTRIDGE REMANUFACTURING INSTRUCTIONS



XEROX® PHASER 6250 TONER CARTRIDGE

REMANUFACTURING THE XEROX PHASER 6250 TONER CARTRIDGE

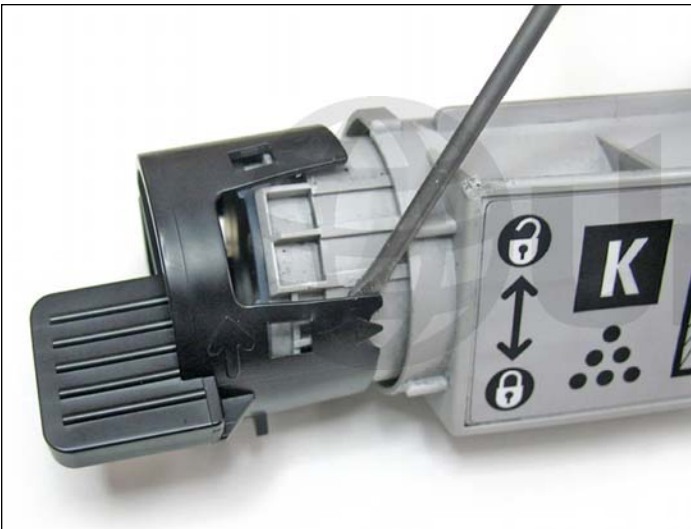
By Javier Gonzalez and the Technical Staff at UniNet



1. We will first need to remove the gearless end cap to access the toner fill cap inside. Using a small flathead screwdriver, carefully pry up one side of the end cap to release it from the two tabs shown.



2. Rotate the cartridge and release the third tab in the same manner.



3. Release the fourth tab.



4. Carefully slide out the end cap.

Note the positioning for reassembly



5. Carefully insert a small flathead screwdriver between the base of the toner fill plug and its housing as shown.



6. Gently pry the inner fill plug out as shown.
Be careful not to damage the plastic housing.



7. Toner fill plug removed.

Note the original positioning of the plug for reassembly.



8. Remove the outer toner tube cover by sliding it away from the gearside end cap.



9. Cover removed.

Note the positioning for reassembly.

Clean thoroughly using compressed air.



SEAL ASSEMBLY

NOTE: A universal Clearseal™ adhesive is required for this procedure.

10. First, using a pair of pliers, gently peel off the worn sealant (shown) from the toner cartridge.



11. Wipe the seal opening and area clean using isopropyl alcohol and a lint-free cloth.



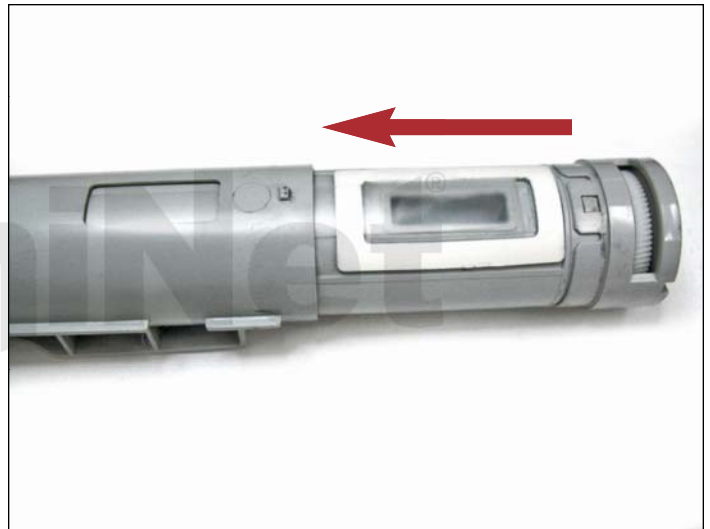
12. Make sure the new seal is in the correct position before applying.



13. Remove the backing from the adhesive side, and carefully seal the opening as shown. Apply pressure with your fingertips to ensure a tight seal.



14. Gently wrap the seal flap around the toner fill opening of the cartridge, prior to installing the outer cover. This will ensure that the seal flap exits properly through the opposite end of the cover.



15. Slide the cartridge into the cover until it is completely inserted.



16. Final result.

You are now ready to fill the cartridge.

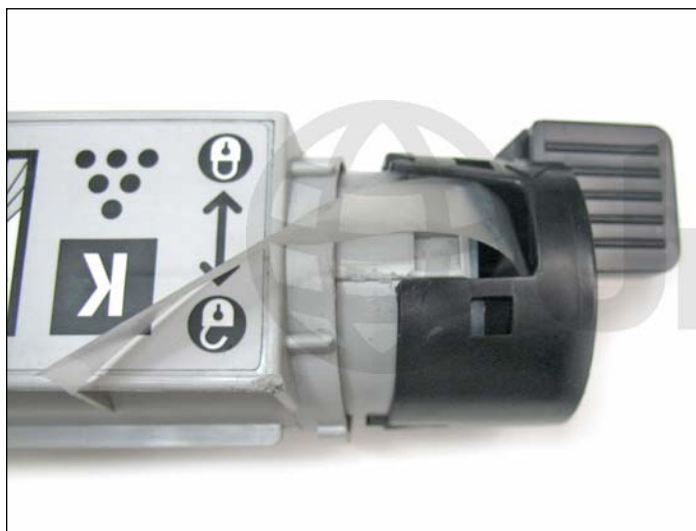


17. Place the cartridge in a vertical position and refill with the appropriate amount of toner, and install the fill plug.

NOTE: Additional carrier may be required. Consult your after market reseller for further information.



18. Wrap the remaining seal flap around the toner fill plug as shown.



19. Place the end cap in its original positioning over the seal and toner fill plug as shown. Make sure the remaining seal flap exits as shown.



20. Push the end cap inward so that it latches onto the four locking tab mechanisms. Make sure all four tabs are properly secured.

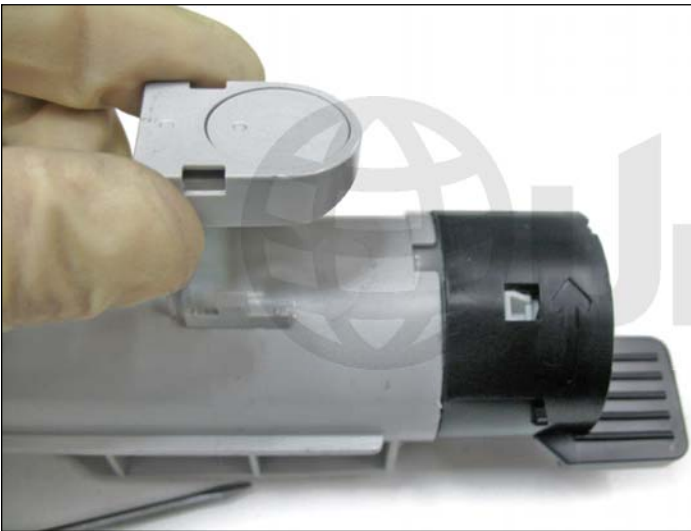


REPLACING THE OEM CHIP

21. Locate the OEM chip housing near the gearless side of the cartridge.



22. Using a small flathead screwdriver, press down on the tabs on both sides to unlock the chip housing.

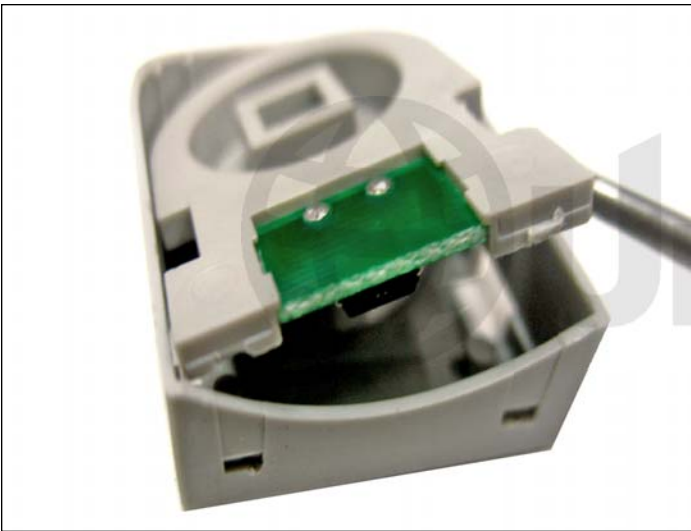


23. Remove the chip housing as shown.

Make sure you are wearing latex gloves for handling chips.



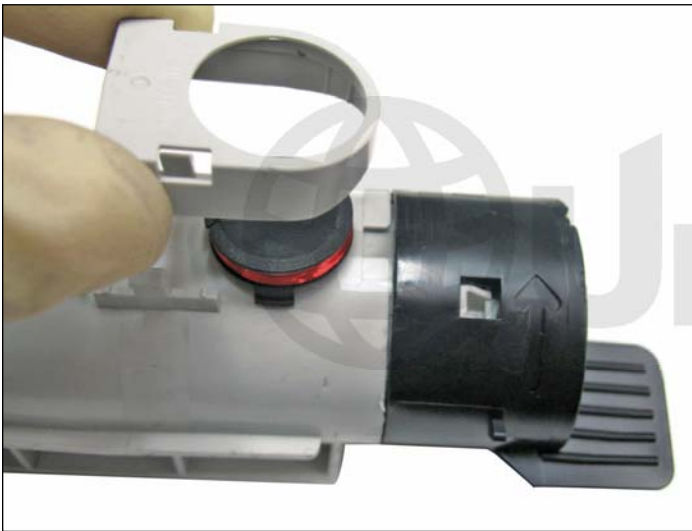
24. Insert an angled hook tool through the slots shown and push down on the locking tabs inside to release the chip from its housing.



25. Carefully remove the chip as shown.



26. Place the new contact chip on the cartridge as shown.



27. Place the empty housing over the chip as shown.



28. Press down until the tabs lock in place.