

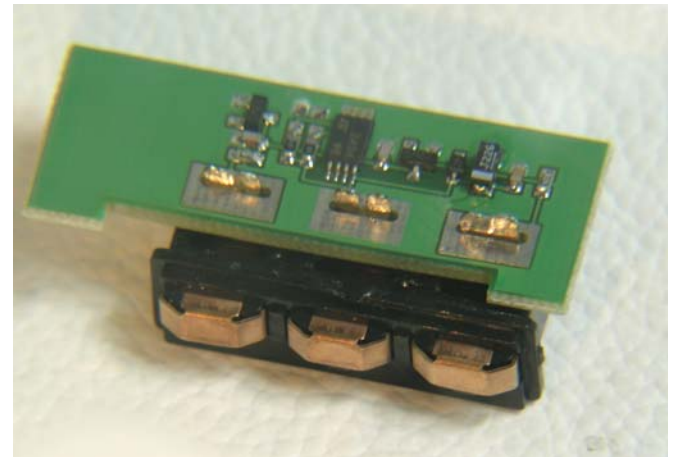
# XEROX PHASER 6100 - REMANUFACTURING INSTRUCTIONS

## \*WITH REPLACEMENT CHIP INSTALLATION\*



# XEROX PHASER 6100

## COLOR LASER PRINTER



**XEROX PHASER 6100 CARTRIDGE INSTRUCTIONS**

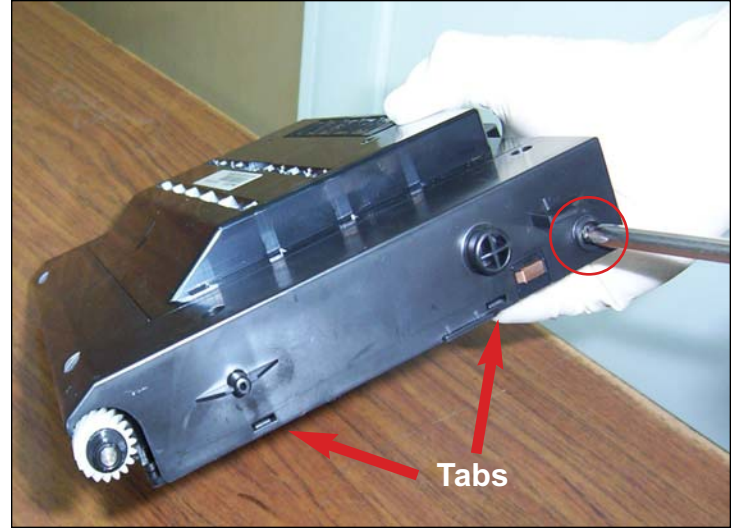
Page 2

**6100 REPLACEMENT CHIP INSTRUCTIONS**

Page 5



1. First, remove the outer shell by loosening and removing five screws. Four are located on top of the cartridge.

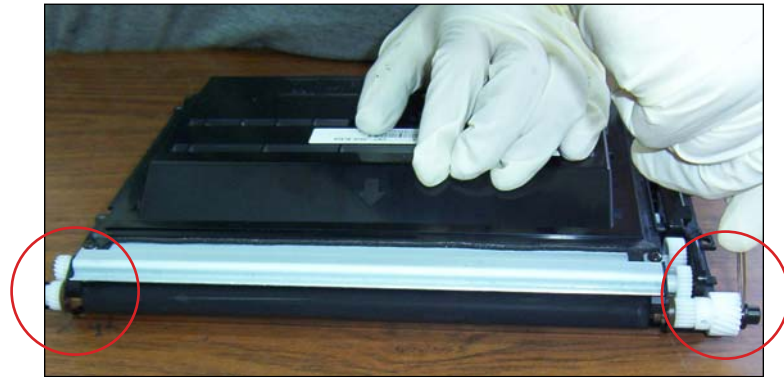


2. The fifth screw is located on the side where the gears are located.

Also, unclip the bottom side of the shell using a flat-head screw driver.

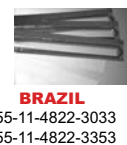
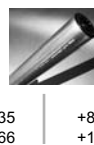
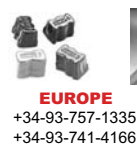


3. Remove the cover as shown. You will notice a small adhesive holding it in place, but it will not be affected if the cover is removed.



**REMOVING THE DEVELOPER ROLLER**

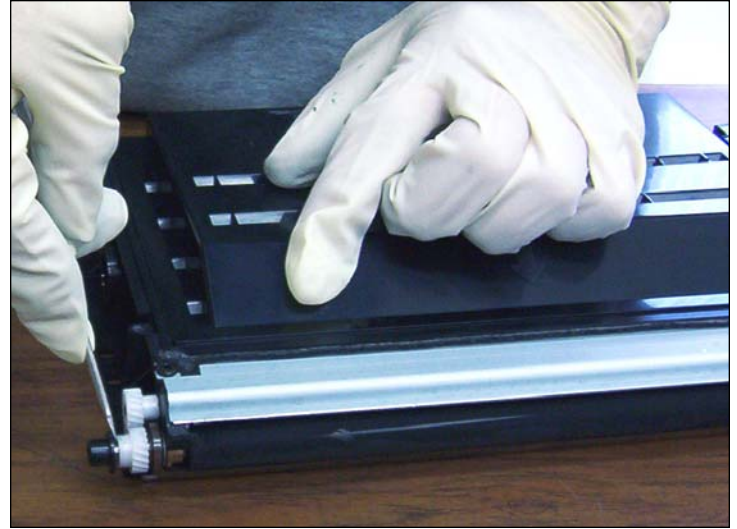
4. Remove the clips located at each end of the axle.



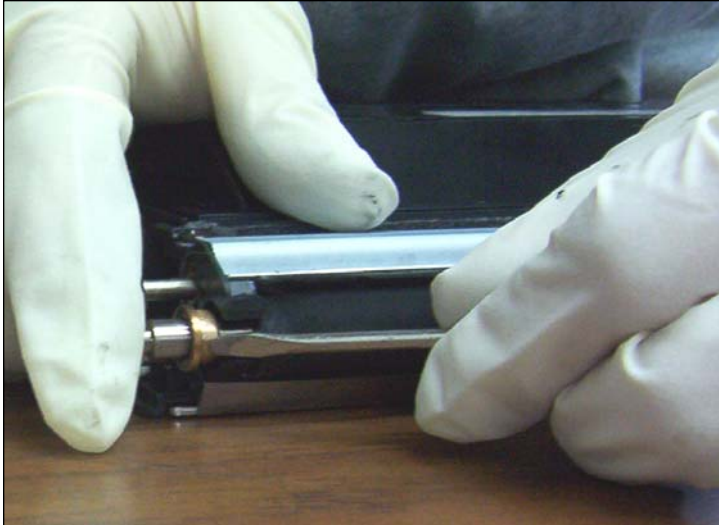




**5. Remove the gears from each side. They should slip off fairly easily.**



**6. Remove the locking metal clip by using a small flat-head screwdriver. Pull the clip upward away from the axle.**



**7. Remove the metal washer-like ring that folds the axle in place where the toner fill plug is located. The other side should remain in place.**

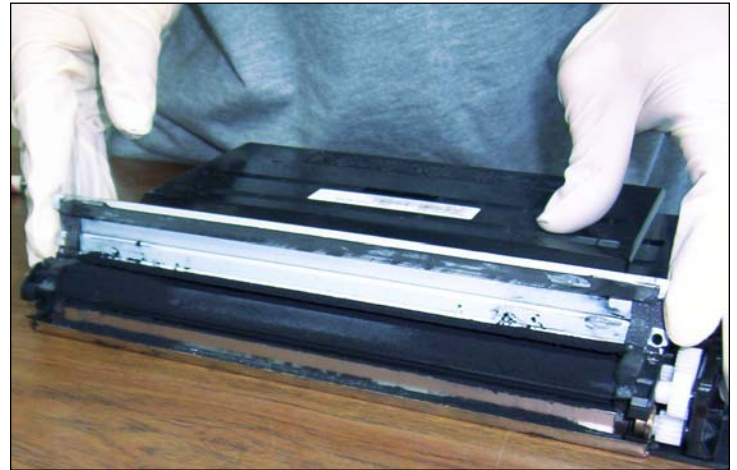


**8. Slip the developer roller outward then slide it away toward the side of the cartridge.**





**9. Remove the metal cover where the sealing blade is located by unscrewing two screws located on the top of the cartridge.**



**10. Do not remove the piece from the cartridge as there are not many after-market parts available for this printer.**

**All you need is access to clean around the supply roller to ensure a clean cartridge.**



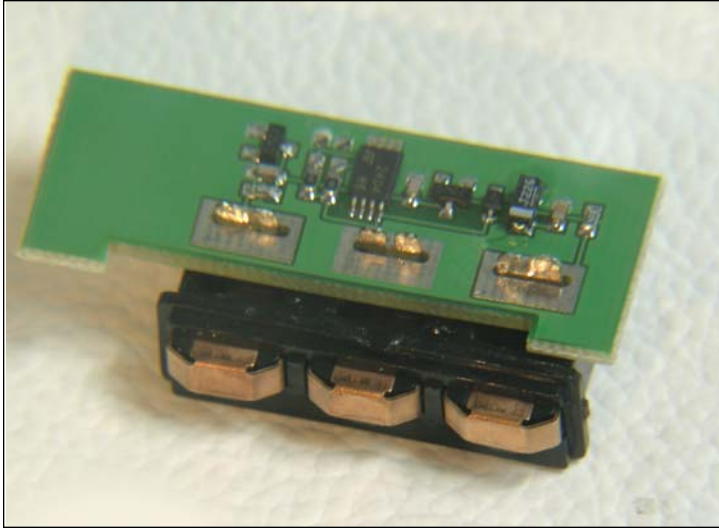
**11. Remove the toner fill plug and start the cleaning process. Use a vacuum on easy areas making sure there is nothing that will vent. Use air pressure for hard-to-reach and sensitive areas.**



**12. After thoroughly cleaning the cartridge and reinstalling cleaned components, you are ready to install your after-market toner.**







**XEROX PHASER 6100  
REPLACEMENT CHIP INSTALLATION**

**Electrical soldering is required for this section.**



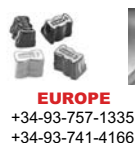
**1. Remove the four screws located on the top and the fifth near the gear side of the outer shell as shown.**

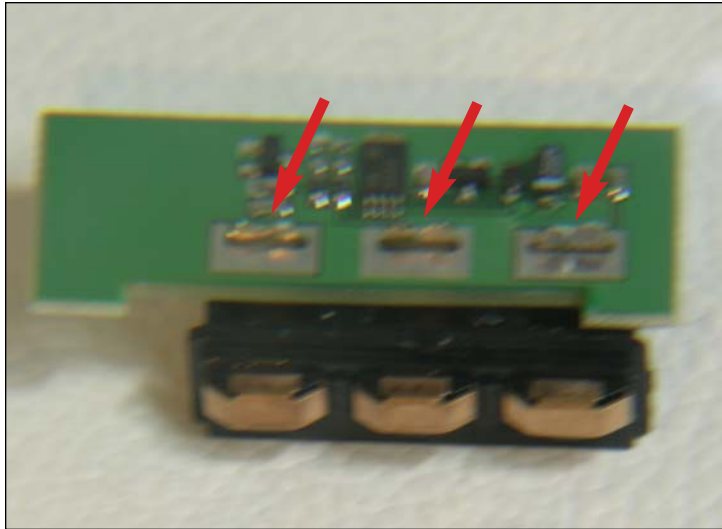


**2. Remove outer shell as shown.**

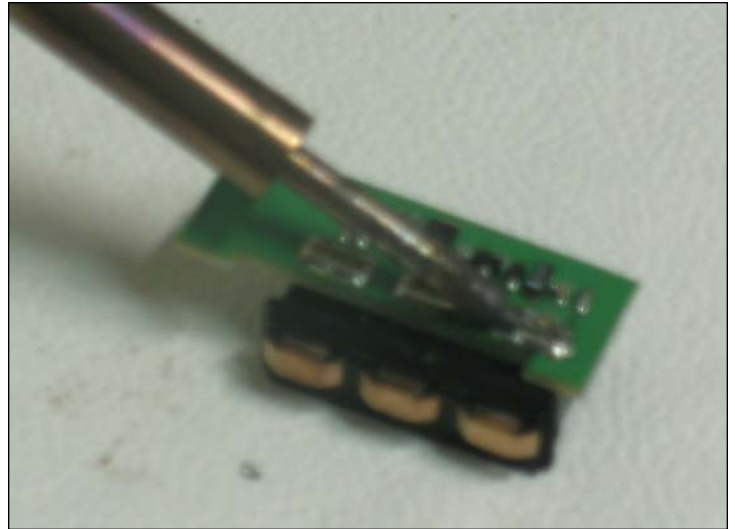


**3. Using a small flat-head screwdriver, carefully pry loose the cartridge contacts assembly located near the toner fill plug on the side of the cartridge.**





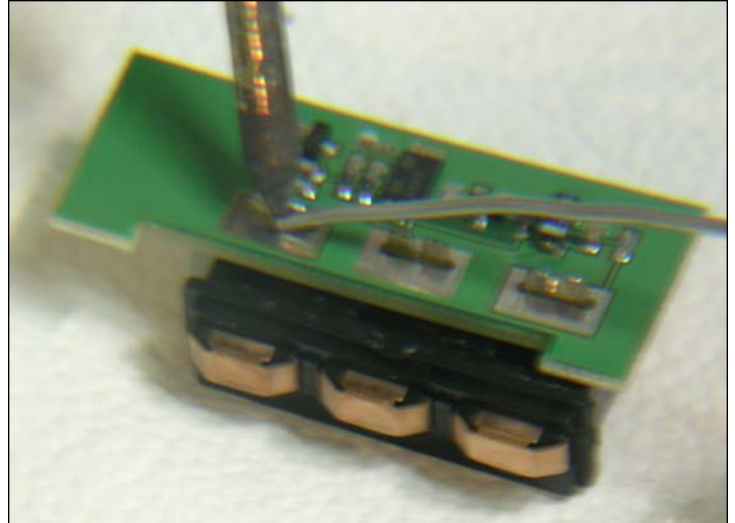
**4. OEM chip with connector removed from cartridge.**



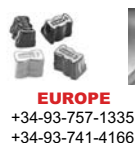
**5. Using a heated soldering iron, desolder the OEM chip from the connector. Avoid overheating or any damage to the connector**

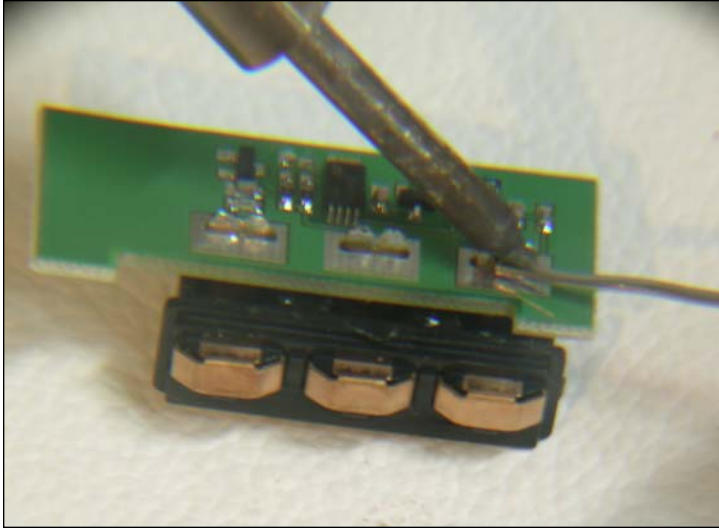


**6. Connector with the chip removed.**

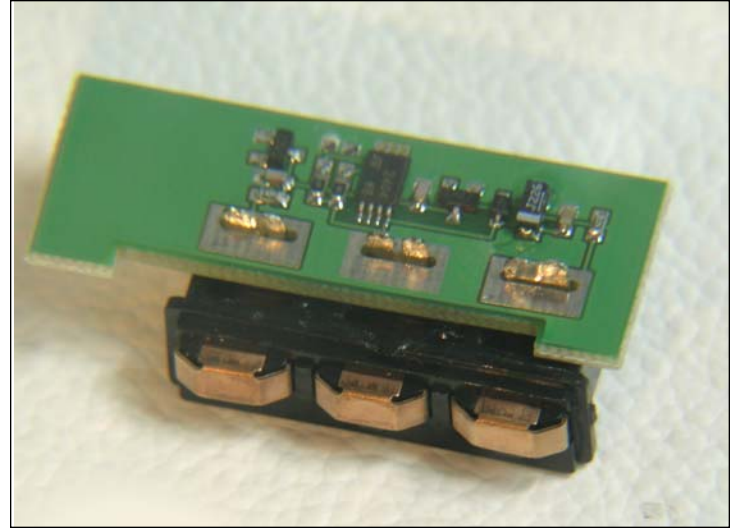


**7. Place our Uninet Smartchip in the same position as the OEM.**





**8. Use a wire solder to weld the new chip.**



**9. The newly installed chip is now ready to be re-installed into your remanufactured cartridge.**

**RECYCLING TIP**


You can convert a Xerox Phaser 6100 cartridge into a Samsung 510 cartridge and vice versa.

If you desolder the two resistors from a CLP 500 model, you can convert these into a CLP 510 or Xerox Phaser 6100 cartridge.

**NOTES**



**USA**  
Ph: +1-310-280-9620  
Fx: +1-310-838-7294



**EUROPE**  
+34-93-757-1335  
+34-93-741-4166



**JAPAN**  
+81-3-44-55-2789  
+1-310-838-7294



**BRAZIL**  
+55-11-4822-3033  
+55-11-4822-3353



**ARGENTINA**  
+54-11-4571-2388  
+54-11-4574-3706



**ARGENTINA**  
+54-11-4571-2388  
+54-11-4574-3706