

SAMSUNG® CLP-350 SERIES TONER CARTRIDGE REMANUFACTURING INSTRUCTIONS



SAMSUNG CLP-350 SERIES TONER CARTRIDGE

REMANUFACTURING THE SAMSUNG CLP-350 SERIES TONER CARTRIDGES

By Mike Josiah and the Technical Staff at UniNet



The CLP-350 cartridges are rated for 4,000 pages Black and 2,000 pages Color. The OEM cartridge part numbers are CLP-K350A Black, CLP-C350A Cyan, CLP-M350A Magenta, and CLP-Y350A Yellow. There is a chip that has to be replaced each cycle, and the cartridge itself has to be modified slightly in order to refill it.



1. In order to clean and fill the cartridge, a hole must be drilled or melted into the cartridge. The hole cannot be placed at the top of the cartridge, as that will cause cartridge problems. The Black cartridge (left photo) should have the hole placed on one of the flat sides. The color cartridges (right photo) should be between 1 and 3 o'clock position or in the top right quarter.



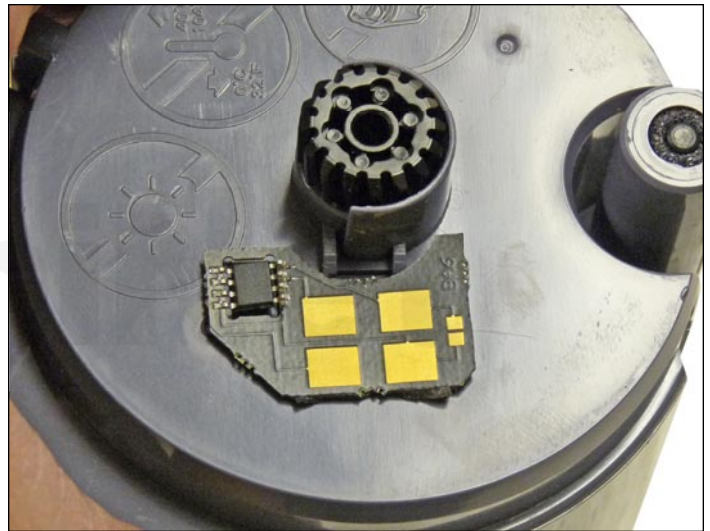
2. The hole can be drilled with a 1/2" drill bit or melted with a soldering iron. If it is drilled, great care must be taken to get all the shavings out. If it is melted, the outer edge of the hole has to be shaved flat with a razor blade. Clean out all the remaining toner/shavings thoroughly.



3. Insert a small funnel into the hole and fill with new toner for use in CLP-350.



4. Cover the hole using a small piece of tape. Make sure the seal is tight and that there are no leaks. Also make sure the tape/label does not extend to the top of the cartridge as it is installed. This area has a very tight fit and the seal may be torn off as the cartridge is installed.



5. The OEM chip is not removed. A new chip is placed over it.

Peel off the adhesive backing on the chip and place it over the OEM.