

# LEXMARK™ E260 • 360 • 460 • X264 • 363 • 364 DRUM UNIT REMANUFACTURING INSTRUCTIONS



LEXMARK® E260 • 360 • 460 • X264 • 363 • 364  
DRUM UNIT

# REMANUFACTURING THE LEXMARK E260/360/460/X264/363/364 DRUM UNIT

By Mike Josiah and the Technical Staff at UniNet



The Lexmark E260/360/460 machines were introduced in December 2008. They replaced the E250/350/450 series of machines. These cartridges are not backwards compatible with the E250/450 series. The cartridges and chips (toner cartridges) are all new.

Pictured above is the new “cheese cloth” type wrapper in which the new drum cartridges arrive in, along with the new plastic spacer. The plastic spacer keeps the PCR from flattening and from coming in contact with the drum.

One major change in these cartridges is the way the drum is held into the cartridge. Gone are the days where there was just an E-ring you had to remove to be able to remove the drum. Now there is a plastic locking ring that can be tricky to remove without damaging it. It can be done but you have to be careful. You also need to watch your fingers as you remove this ring. You can easily slip and damage some fingers (trust me on this).

The new machines are based on a Lexmark 35 or 40ppm (depending on the printer), 1200 DPI engine. With a street price of around \$199.00 USD (August 2010) for the E260, these machines continue to be very popular.

As with all the Lexmark E series machines, there are two cartridges used for this engine, a toner and drum unit. These instructions cover the drum unit. While the toner cartridges are different for different regions of the world, the drum unit is the same worldwide. A listing of all the cartridges available worldwide as well as U.S. pricing follows.

**CARTRIDGES FOR USE IN THE E260/360/460 - USA & CANADA**

<b>Part#</b>	<b>Type</b>	<b>Yield</b>	<b>List Price</b>
E260A11A	Std. Return cartridge	3,500	\$133.41*
E260A21A	Standard cartridge	3,500	\$172.50*
E360H11A	HY Return E360/460 ONLY	9,000	\$258.50*
E360H21A	HY Standard E360/460 ONLY	9,000	\$297.50*
E460X11A	EHY Return cartridge E460 ONLY	15,000	\$335.50*
E462U11A	EHY Return cartridge E462 ONLY	18,000	\$372.00*
E260X22G	OPC Drum cartridge (All)	30,000	\$37.50*

**CARTRIDGES FOR USE IN THE X264/X363/X264 - USA & CANADA**

<b>Part#</b>	<b>Type</b>	<b>Yield</b>	<b>List Price</b>
X264A11G	Std. Return cartridge	3,500	\$134.00*
X264H11G	HY Return cartridge	9,000	\$258.00*

\*Pricing in U.S. American Dollars, current from August 2010.

**CARTRIDGES FOR USE IN THE E260/360/460 - EUROPE & THE MIDDLE EAST**

<b>Part#</b>	<b>Type</b>	<b>Yield</b>
0E260A11E	Std. Return cartridge	3,500
0E260A21E	Standard cartridge	3,500
0E360H11E	HY Return E360/460 ONLY	9,000
0E360H21E	HY Standard E360/460 ONLY	9,000
0E460X11E	EHY Return cartridge E460 ONLY	15,000
0E460X21E	EHY Standard Cartridge E460 ONLY	15,000
0E462U11E	EHY Return cartridge E462 ONLY	18,000
0E260X22G	OPC Drum cartridge (All)	30,000

**CARTRIDGES FOR USE IN THE X264/X363/X264 - EUROPE & THE MIDDLE EAST**

<b>Part#</b>	<b>Type</b>	<b>Yield</b>
X264A11E	Std. Return cartridge	3,500
X264H11E	HY Return cartridge	9,000

**CARTRIDGES FOR USE IN THE E260/360/460 - ASIA PACIFIC REGION**

<b>Part#</b>	<b>Type</b>	<b>Yield</b>
E260A11P	Std. Return cartridge	3,500
E260A21P	Standard cartridge	3,500
E360H11P	HY Return E360/460 ONLY	9,000
E360H21P	HY Standard E360/460 ONLY	9,000
E460X11P	EHY Return cartridge E460 ONLY	15,000
E460X21P	EHY Standard Cartridge E460 ONLY	15,000
E462U11P	EHY Return cartridge E462 ONLY	18,000
E260X22G	OPC Drum cartridge (All)	30,000

**CARTRIDGES FOR USE IN THE X264/X363/X264 - ASIA PACIFIC REGION**

<b>Part#</b>	<b>Type</b>	<b>Yield</b>
X264A11P	Std. Return cartridge	3,500
X264H11P	HY Return cartridge	9,000

**CARTRIDGES FOR USE IN THE E260/360/460 - LATIN AMERICA**

<b>Part#</b>	<b>Type</b>	<b>Yield</b>
E260A11L	Std. Return cartridge	3,500
E260A21L	Standard cartridge	3,500
E360H11L	HY Return E360/460 ONLY	9,000
E360H21L	HY Standard E360/460 ONLY	9,000
E460X11L	EHY Return cartridge E460 ONLY	15,000
E460X21L	EHY Standard Cartridge E460 ONLY	15,000
E462U11L	EHY Return cartridge E462 ONLY	18,000
E260X22G	OPC Drum cartridge (All)	30,000

**CARTRIDGES FOR USE IN THE X264/X363/X264 - LATIN AMERICA**

<b>Part#</b>	<b>Type</b>	<b>Yield</b>
X264A11L	Std. Return cartridge	3,500
X264H11L	HY Return cartridge	9,000

The same drum cartridge (X260X22G) as noted above is used worldwide in both the printers and multifunction machines.

**MACHINES BASED ON THIS ENGINE**

**Lexmark E260d**  
**Lexmark E260dn**  
**Lexmark E360d**  
**Lexmark E362dn**  
**Lexmark E460dn**  
**Lexmark E460dw**  
**Lexmark E462**  
**Lexmark X264**  
**Lexmark X363**  
**Lexmark X264**

How to take test prints, resetting the printer, as well as cartridge troubleshooting are covered at the end of the article.

**NOTE:** These drum units do not use chips. They do however need to be reset when replaced.

**TOOLS NEEDED**

1. Phillips head screwdriver
2. Small common screwdriver
3. Vacuum approved for toner
4. Needle nose pliers

**SUPPLIES NEEDED**

1. New replacement drum for use in Lexmark E260/360/460/X264/363/364
2. New wiper blade
3. Cotton swabs
4. Isopropyl alcohol
5. Drum padding powder

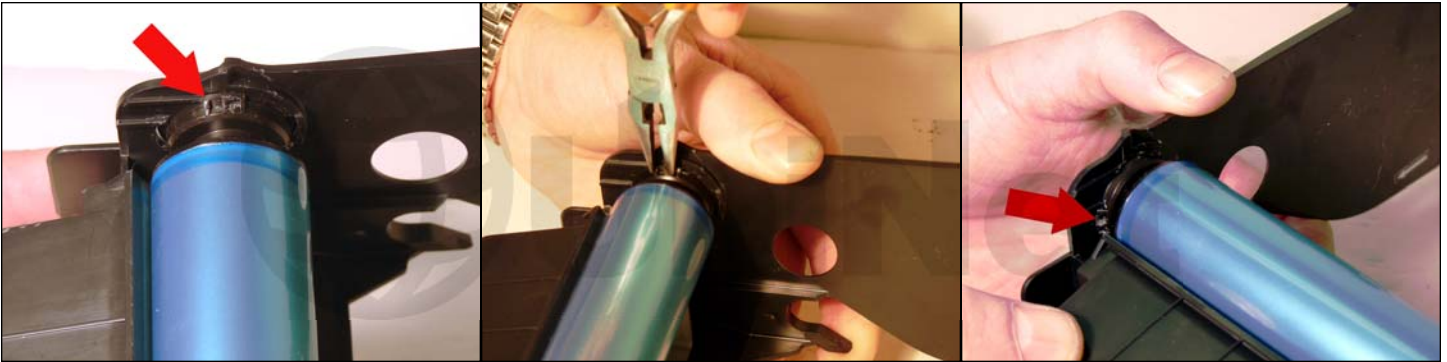
As stated in the introduction, the drum is held in place by a new type of plastic locking ring.

This ring must be removed in order to be able to remove the drum. Take your time and be careful with this.



1. Remove the two screws from the handle.

Remove the handle.



2. With a pair of needle nose pliers, push the inside of the retaining ring to the left while slightly bending the cartridge wall out. Turn the ring until the tabs are centered in the two slots. Turn slowly and watch your fingers. It is easy to slip and hurt yourself here.



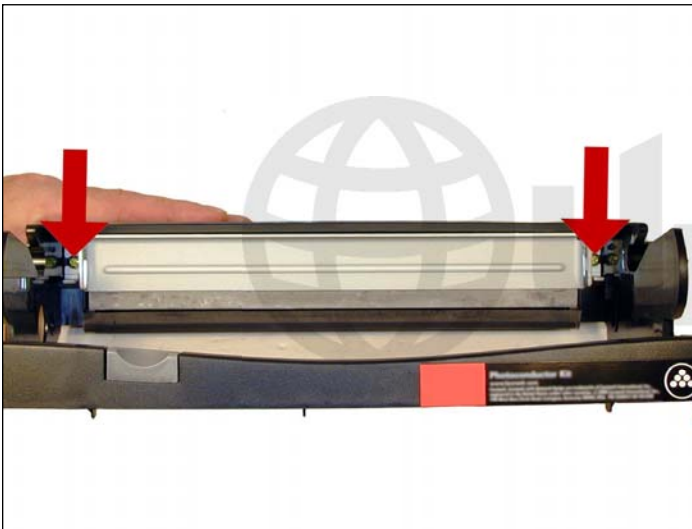
3. From the inside of the cartridge, take a common screwdriver and gently pry up the locking ring/drive hub from the center. The drive hub will come off with it. Make sure you pry it off straight up. If it becomes deformed from prying it off at an angle, it may not sit properly when re-installed.



4. Carefully remove the drum.



5. Carefully lift out the PCR. The PCR holders and springs will come out with the PCR. Be very careful not to touch the roller with your skin. As with any PCR, the oils, naturally present in your skin, will be absorbed by the roller and cause printing problems (extra marks on the page).



6. Remove the two screws from the wiper blade.



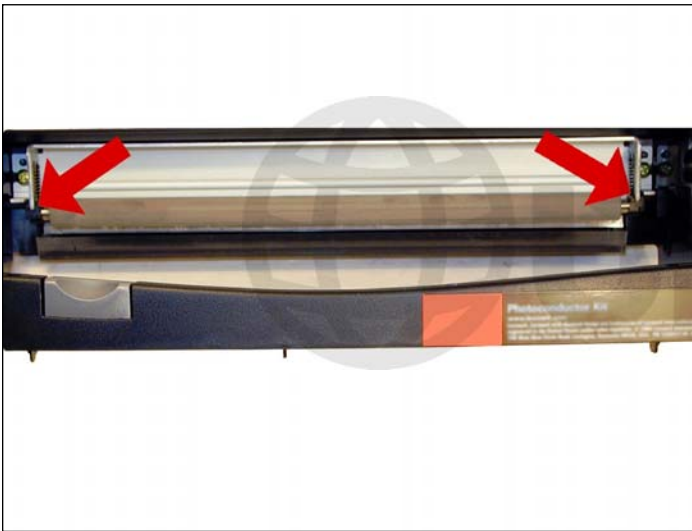
7. Remove the wiper blade, and clean out any waste toner.



8. Install a new wiper blade coated with your preferred lubricant and two screws.

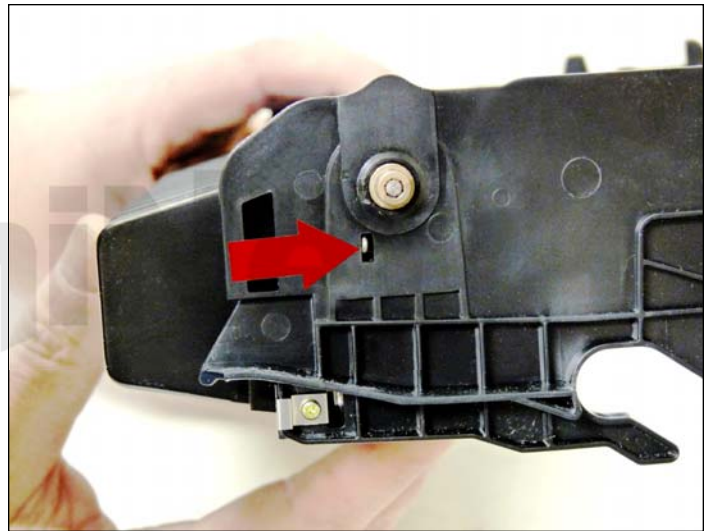


9. Clean the PCR with your preferred PCR cleaner, and clean the PCR holders with 99% pure isopropyl alcohol. Snap on to the ends of the PCR.



10. Install the PCR and holders.

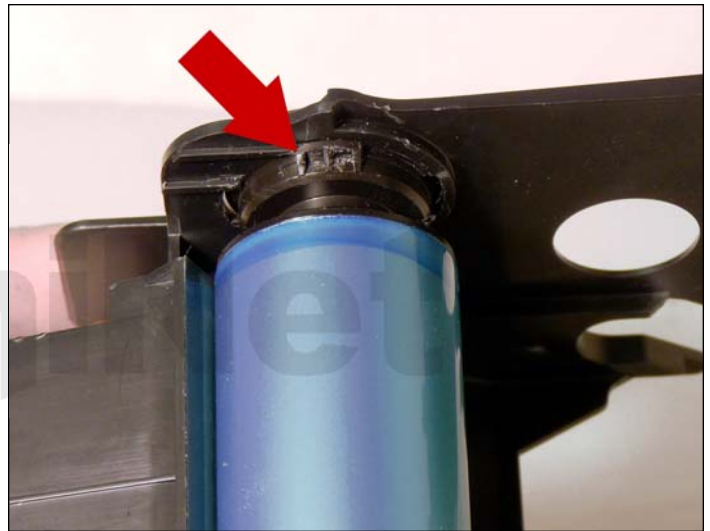
Make sure the springs fit in the proper place.



11. With the waste chamber facing away from you, install the drum so that the large gear is on the left side. The tail of the spring should lock into the hole in the cartridge wall.



12. Install the locking ring making sure the tabs on the ring line up with the two slots in the cartridge wall. From the outside of the cartridge with the tips of the needle nose pliers in the two slots, press the ring in and turn the locking hub so it locks into the cartridge wall. Turning the ring to the right is easier to do than the opposite direction.







13. Press in the drive hub. Make sure it fits properly and is flush with the locking ring when seated.



14. Install the handle and two screws. Just to make sure that everything is meshing properly and lubricated properly, rotate the drum by the large gear in the proper direction. This is always a good idea for drum units as a final check before installing the cartridge in your test machine.



15. After the cartridge has been tested and if the plastic drum spacer is available, install it now.

**RESETTING THE E260/X264 DRUM UNIT**

1. Install the toner cartridge into the new/remanufactured drum unit.
2. With the front door still open, press and hold the “X” Button for five seconds.
3. The lights will cycle.
4. Close the front door.

**RESETTING THE E360/E460/X363/X364 DRUM UNIT**

1. Install the toner cartridge into the new/remanufactured drum unit.
2. With the front door still open, press and hold the “X” Button for five seconds.
3. The display will read, “RESETTING PC.”
4. Close the front door

**PRINTING TEST PAGES E360/E460/X363/X364 SERIES**

1. Press the “Key” button on the control panel
2. Press the “Down Arrow” until UTILITIES MENU appears on the display
3. Press the “Select” button
4. Press the “Down Arrow” until the PRINT MENUS, PRINT STATS, or PRINT FONTS appears on the display.

**REPETITIVE DEFECT CHART**

38.8mm	PCR
48.3mm	Developer Roller
52.4mm	Transfer Roller
80.0mm	Upper fuser Belt
98.3mm	OPC Drum

**PRINTER ERROR CODES**

Most error codes are in plain English so we will not repeat them here, but a few are numeric. There are quite a few of the “XX” numbers under each category. We have just listed the basics here.

**30.XX Cartridge Errors**

There is a mechanical issue with the cartridge or the chip is bad.

**31.XX Defective Cartridge Errors**

Either the cartridge is missing, the chip is bad/or missing or the chip reader in the printer is defective.

**200.XX Paper Jam****920.XX 921.XX, 922.XX All various Fuser errors**