

DELL[®] 1250 • 1350 • 1355

EASY TO REMANUFACTURE CARTRIDGE INSTRUCTIONS



DELL 1250 • 1350 • 1355 TONER CARTRIDGE

REMANUFACTURING THE DELL 1250/1350/1355 TONER CARTRIDGE

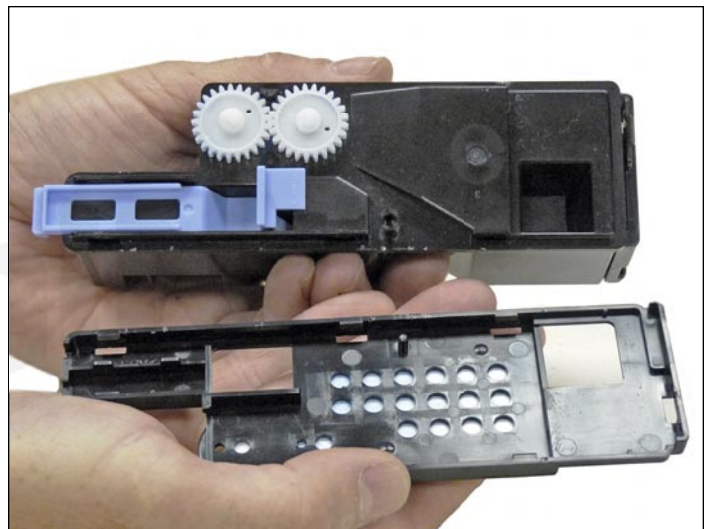
By Mike Josiah and the Technical Staff at UniNet



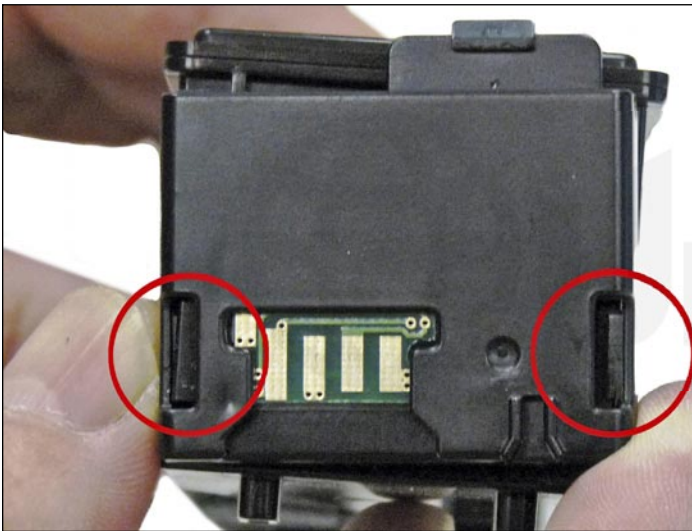
The Dell 1250 cartridges are rated for 2000 pages black and 1400 pages color. The OEM numbers are 331-0778 Black, 331-0777 Cyan, 331-0780 Magenta, and 331-0779 Yellow. There is a chip that must be replaced every cycle. **NOTE:** The black cartridge is physically larger than the colors.



1. Remove the top cover by taking a flat head screwdriver and prying up the five tabs.



2. Remove the top cover.



3. Pry up the two tabs on the end cap and remove.



4. Remove the fill plug and clean out all remaining toner.

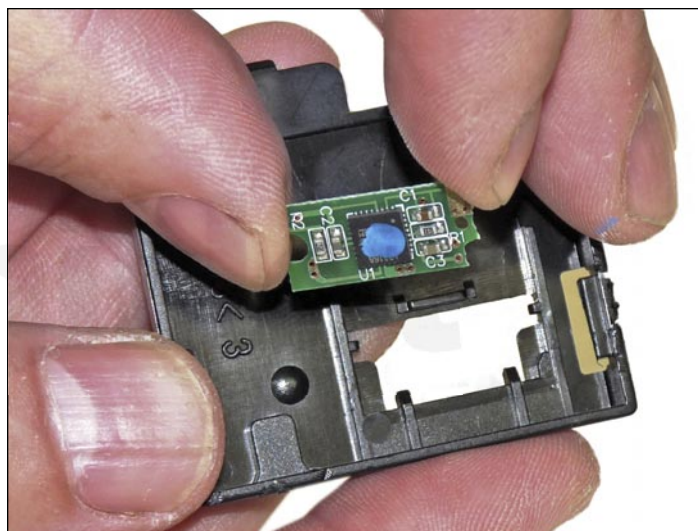
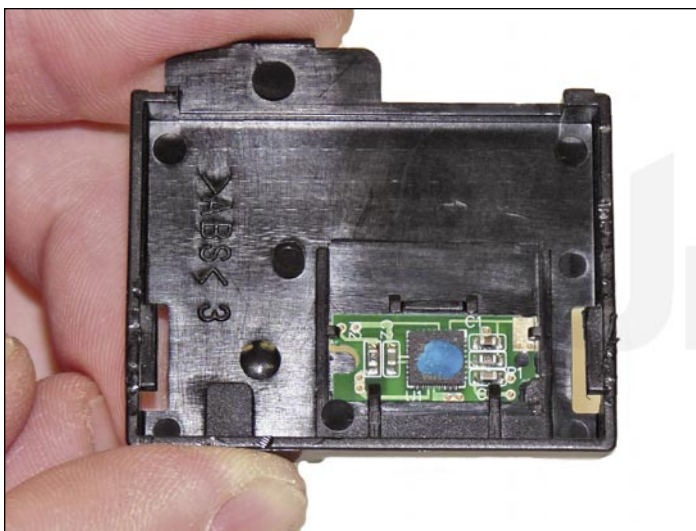


5. Press in on the waste toner port and vacuum all the waste toner out from the cartridge.

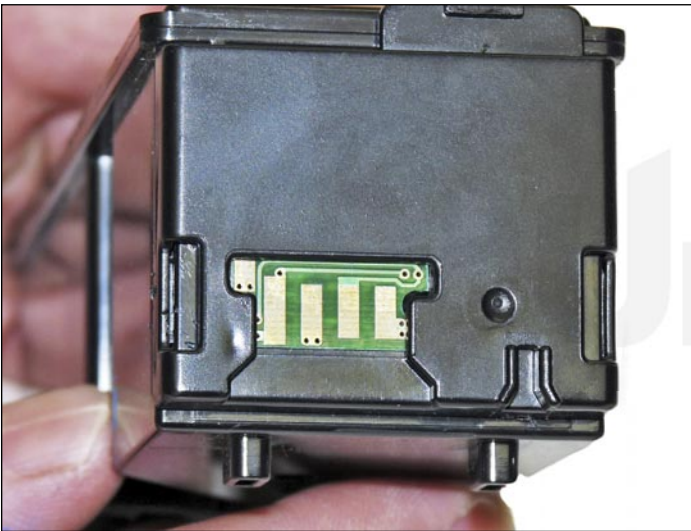


6. Fill the hopper with the appropriate color toner.

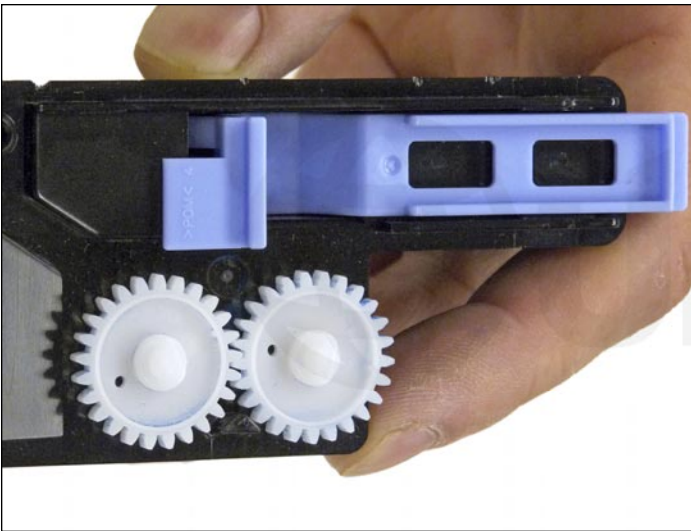
Replace the fill plug.



7. Replace the chip in the end cap by lifting it slightly and sliding it out.



8. Install the end cap by snapping it in place.



9. Install the top cover.

Make sure the two gears and the blue handle are in place.