

DELL® 1320CN CARTRIDGE REMANUFACTURING INSTRUCTIONS



DELL® 1320CN COLOR LASER PRINTER



BLACK TONER CARTRIDGE

www.uninetimaging.com

USA • UK • EUROPE • AFRICA • JAPAN • CHINA • BRAZIL • MEXICO • COLOMBIA • ARGENTINA • VENEZUELA
11124 Washington Blvd., Culver City, CA, U.S.A. 90232 • Ph +1 310 280 9620 • Fx +1 310 838 7294 • techsupport@uninetimaging.com

© 2008 UniNet Imaging Inc. All Trademark names are property of their respective owners. Product brand names mentioned are intended to show compatibility only. UniNet Imaging does not warrant downloaded information. Summit Technologies is a division of UniNet Imaging Inc.

Remanufacturing the Dell® 1320 CN Toner Cartridge

By Mike Josiah

First released in December, 2007 the Dell 1320cn printers are based on an 16ppm black, 12ppm color 600 dpi engine. The toner cartridges are very small and very easy to do. In fact, this is most likely one of the simplest cartridges I have ever written about.

At the time of this writing Dell was selling these machines for \$229.00 after a \$70.00 instant rebate. With prices like that and the yield so low on the toner cartridges combined with Dell's cost on them, anyone who has this machine will be looking to save some money on the cartridges. There is a chip on the cartridge that has to be replaced every cycle and these chips are available. The machines when new come with LY cartridges. These cartridges are physically identical to the HY so they can easily be made into the HY cartridge.

The Dell 1320Cn machines also use a unique single drum cartridge that has all four drums in it. (See **Figure 1**). This cartridge will be covered in a later instruction.

Part numbers from Dell never seem to be all that clear so I am listing them in all the versions I found. The majority of the LY numbers are taken from the Staples® retail web site:

HY Black	HY Cyan	HY Magenta	HY Yellow
310-9058	310-9060	310-9064	310-9062
593-10258	593-10259	593-10261	593-10260

LY Black	LY Cyan	LY Magenta	LY Yellow
310-9059	310-9061	310-9065	310-9063
RY857	RY854	RY855	RY856
719011	719019	718936	718934
MT234/Ry857	MT235/Ry854	MT237/Ry855	MT236/Ry856



Figure 1: Drum Unit

www.uninetimaging.com

USA • UK • EUROPE • AFRICA • JAPAN • CHINA • BRAZIL • MEXICO • COLOMBIA • ARGENTINA • VENEZUELA

11124 Washington Blvd., Culver City, CA, U.S.A. 90232 • Ph +1 310 280 9620 • Fx +1 310 838 7294 • techsupport@uninetimaging.com



Figure 2



Figure 3

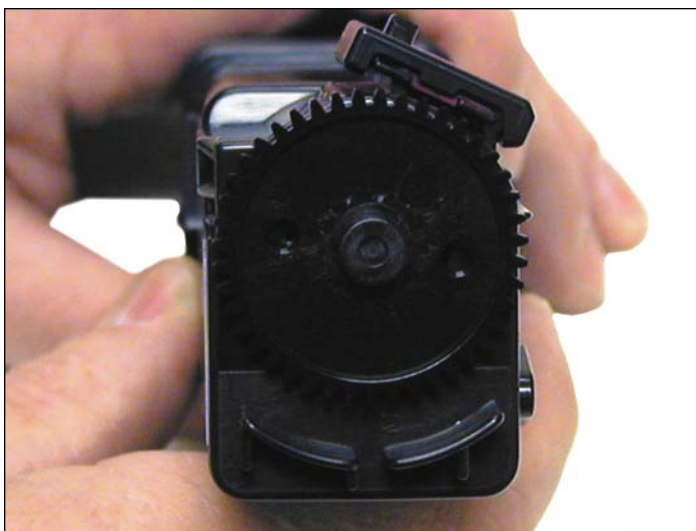


Figure 4



Figure 5

All four of the toner cartridges are different in that they each have unique tabs on the back that prevent one color from being inserted into another color's slot. See **Figures 2, 3, 4 & 5**.

These are extremely fast and easy cartridges to do and should prove to be a nice profit center for you.

www.uninetimaging.com

USA • UK • EUROPE • AFRICA • JAPAN • CHINA • BRAZIL • MEXICO • COLOMBIA • ARGENTINA • VENEZUELA
11124 Washington Blvd., Culver City, CA, U.S.A. 90232 • Ph +1 310 280 9620 • Fx +1 310 838 7294 • techsupport@uninetimaging.com

REQUIRED TOOLS

1. Toner approved vacuum
2. A small Common screw driver

REQUIRED SUPPLIES

1. 100g 1320 Color Toner
2. Replacement chip
3. Cotton swabs
4. Soft, lint free wipes



1. Remove the black tape from the seam of the supply hopper and the waste chamber. Save the tape for use when re-assembling the cartridge.



2. Press in on the two tabs of one side as shown to release the waste chamber. It is sometimes helpful to press back on the waste chamber as the tabs are pressed in.

www.uninetimaging.com

USA • UK • EUROPE • AFRICA • JAPAN • CHINA • BRAZIL • MEXICO • COLOMBIA • ARGENTINA • VENEZUELA

11124 Washington Blvd., Culver City, CA, U.S.A. 90232 • Ph +1 310 280 9620 • Fx +1 310 838 7294 • techsupport@uninetimaging.com



3. Clean out any waste toner from the chamber.



4. Remove the supply hopper cover. Clean out any remaining toner.



5. With a clean lint free cloth, wipe down the seals on both sides of the cover. No chemicals are needed to clean it, just the cloth.



www.uninetimaging.com

USA • UK • EUROPE • AFRICA • JAPAN • CHINA • BRAZIL • MEXICO • COLOMBIA • ARGENTINA • VENEZUELA
11124 Washington Blvd., Culver City, CA, U.S.A. 90232 • Ph +1 310 280 9620 • Fx +1 310 838 7294 • techsupport@uninetimaging.com



6. Check to make sure the slide cover of the hopper is clean and in the proper place.



7. Fill the hopper with the appropriate color toner. Remember, while the cartridges all look the same, they are not interchangeable. Each color has a different set of plastic tabs.

See **Figures 2-5** for the tabs.



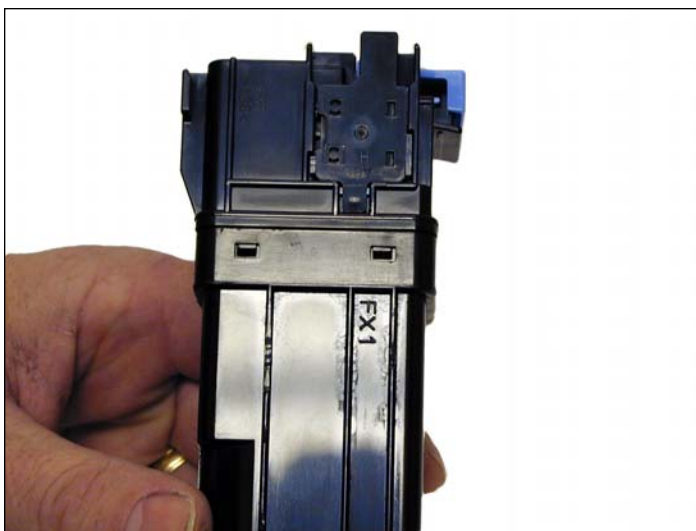
8. Clean the plastic lip where the hopper cover sits of any toner, replace the cover.

www.uninetimaging.com

USA • UK • EUROPE • AFRICA • JAPAN • CHINA • BRAZIL • MEXICO • COLOMBIA • ARGENTINA • VENEZUELA
11124 Washington Blvd., Culver City, CA, U.S.A. 90232 • Ph +1 310 280 9620 • Fx +1 310 838 7294 • techsupport@uninetimaging.com



9. Install the waste chamber on to the supply hopper.



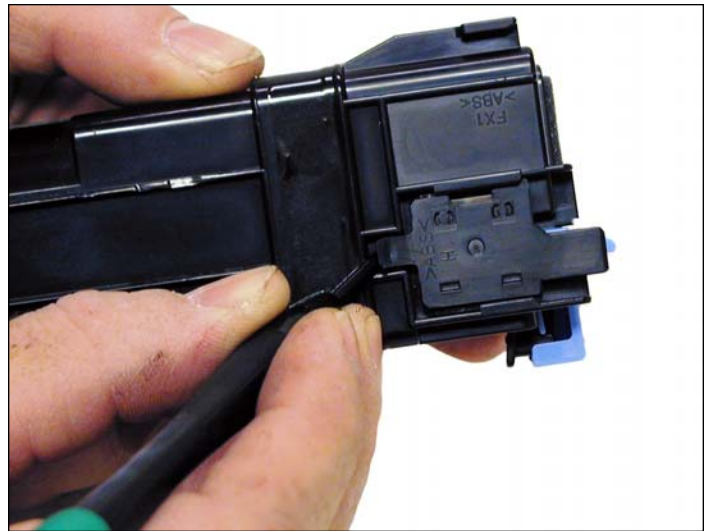
10. Make sure all four tabs are locked in place.

www.uninetimaging.com

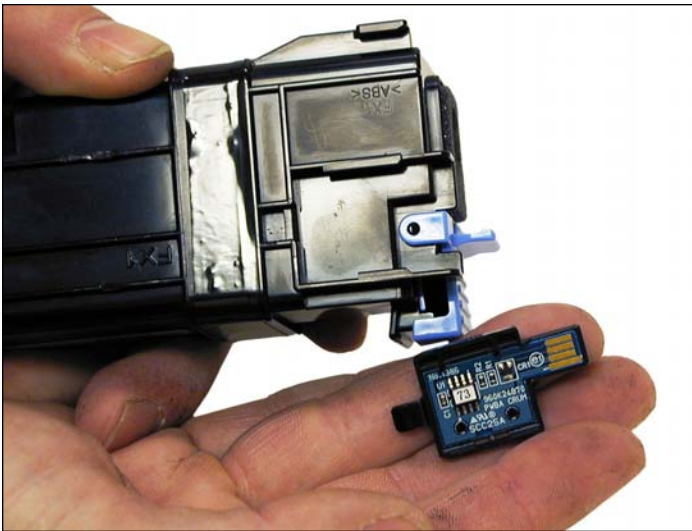
USA • UK • EUROPE • AFRICA • JAPAN • CHINA • BRAZIL • MEXICO • COLOMBIA • ARGENTINA • VENEZUELA
11124 Washington Blvd., Culver City, CA, U.S.A. 90232 • Ph +1 310 280 9620 • Fx +1 310 838 7294 • techsupport@uninetimaging.com



11. Re-install the black tape seal across the seam. If the OEM tape is not useable, good black Rubber electrical tape (not the vinyl type) will work fine (toner will stick to anything made from vinyl).



12. Carefully pry up the plastic chip holder tab.

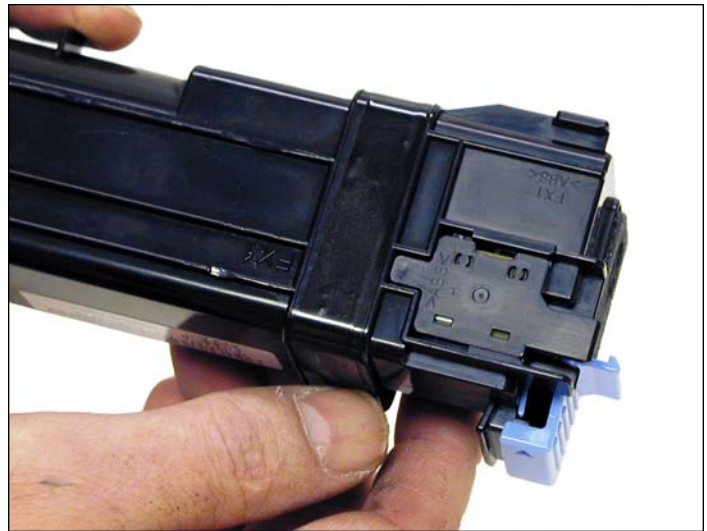
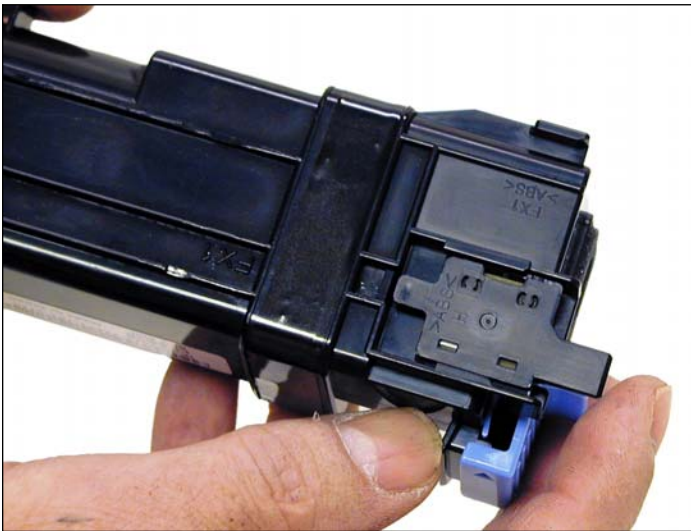


13. Slide the holder out of the cartridge and replace the chip.



www.uninetimaging.com

USA • UK • EUROPE • AFRICA • JAPAN • CHINA • BRAZIL • MEXICO • COLOMBIA • ARGENTINA • VENEZUELA
 11124 Washington Blvd., Culver City, CA, U.S.A. 90232 • Ph +1 310 280 9620 • Fx +1 310 838 7294 • techsupport@uninetimaging.com



14. Slide the holder back in place until the tab locks in place.

PRINTING A TEST PAGE

Press and hold the CONTINUE button for a few seconds. A series of printer settings pages will print out. (Including the page count). Other test pages are generated through the printer driver.

LIGHT SEQUENCES

Error Light	
Steady: Orange	Print head, or transfer belt unit life is coming to an end or CTD sensor is dirty (see below).
Blinks: Orange	The print head or transfer belt life is over. The CTD sensor is dirty (see below).

Toner Light	
Steady: Orange	Toner is low.
Blinks: Orange	Toner is empty or a toner error occurred.

CLEANING THE CTD SENSOR

The CTD sensor needs to be cleaned when the alert is shown on the PC or printer control panel.

Open the front door of the printer. Just above the belt you will see a black plastic assembly with warning labels on it. the sensor is located in the center of that assembly, facing the belt. (It's the only metal part you can see).

www.uninetimaging.com

USA • UK • EUROPE • AFRICA • JAPAN • CHINA • BRAZIL • MEXICO • COLOMBIA • ARGENTINA • VENEZUELA

11124 Washington Blvd., Culver City, CA, U.S.A. 90232 • Ph +1 310 280 9620 • Fx +1 310 838 7294 • techsupport@uninetimaging.com